



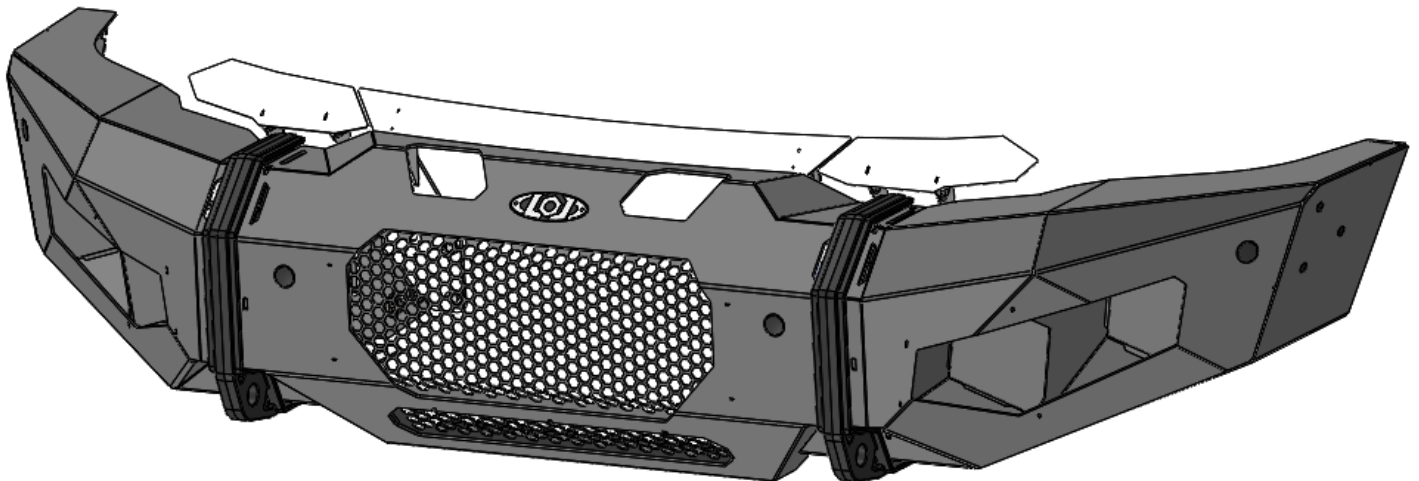
DESTROYER SERIES

TRUCK

CHEVY 2020 FRONT
BUMPER

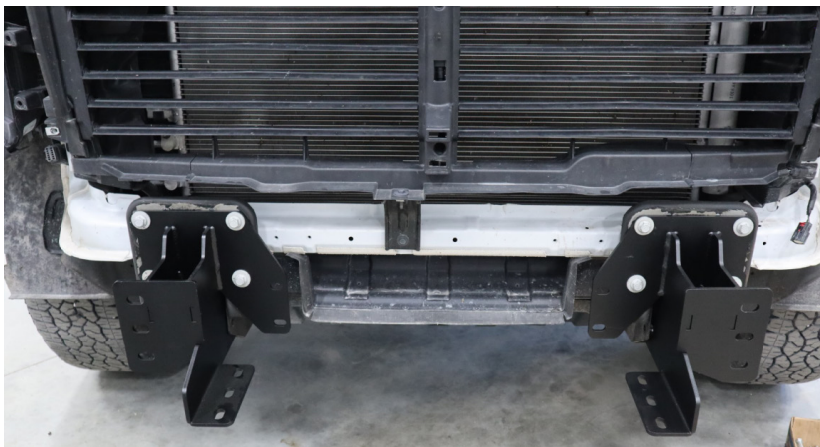


***VERIFY YOU HAVE ALL THE COMPONENTS BEFORE STARTING THE INSTALLATION. REFER TO THE
ENGINEERING DRAWINGS AT THE END OF THIS DOCUMENT FOR A COMPLETE PARTS LIST***



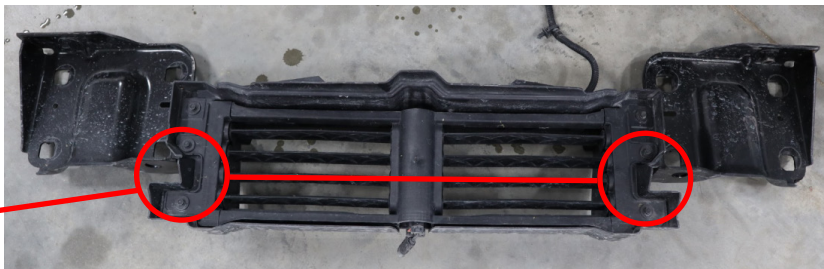
Begin by removing the factory front bumper from your truck.

If your bumper has fog lights and parking sensors, you will want to remove the sensors and wiring harness and sensor housings to install in your new bumper.



You will also need to remove the Lower Radiator Shutter Assembly and shroud and the two metal frame mounting brackets on each side.

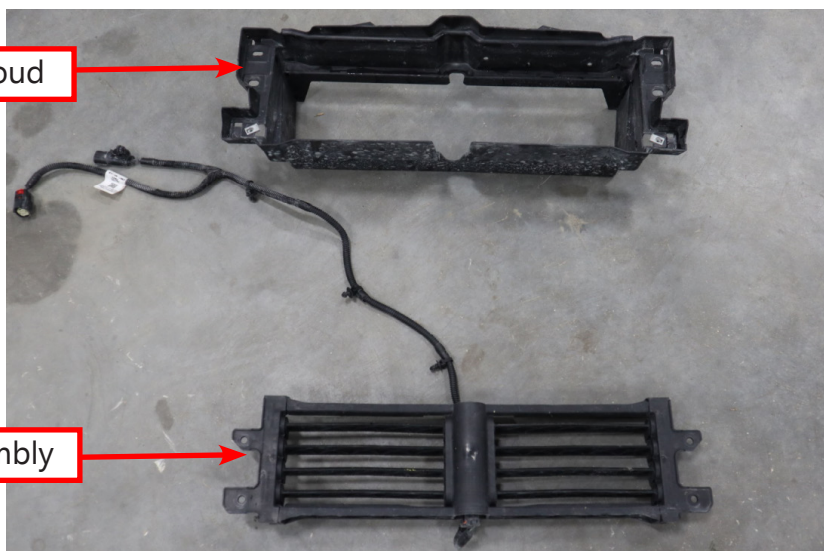
Remove these
4 screws



Plastic Shroud

Then remove the actual Shutter Assembly from the plastic shroud by removing the four screws circled above. This Shutter Assembly will be reinstalled onto your new LOD Frame Mounts in the following steps.

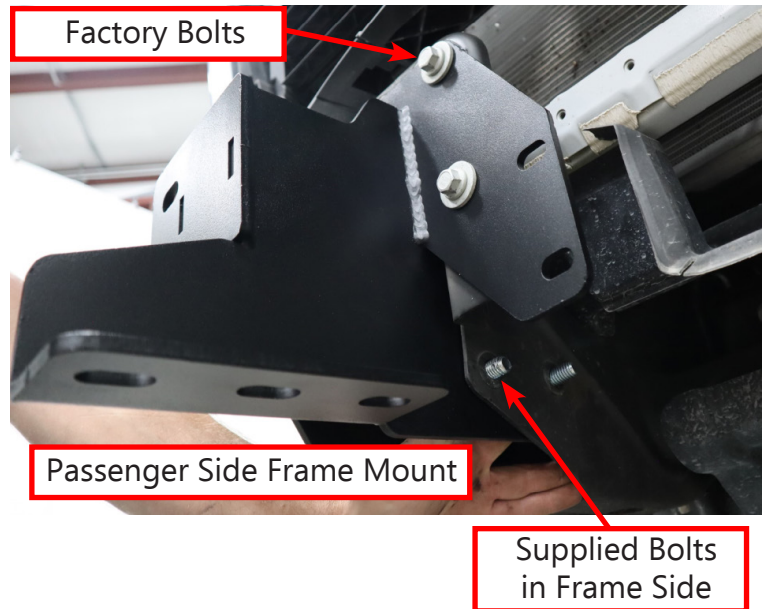
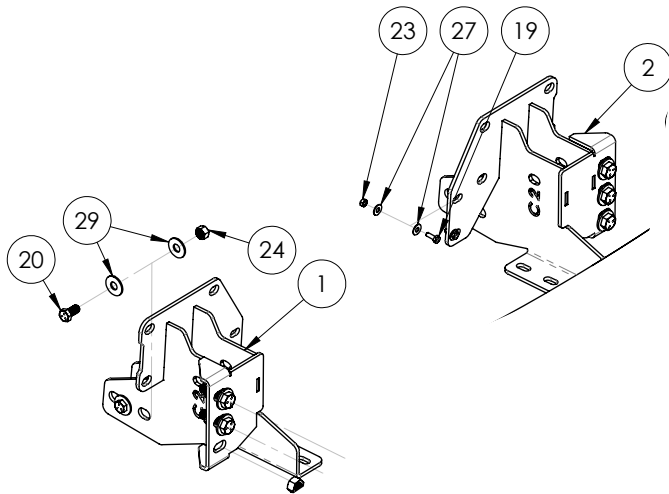
Shutter Assembly



Install the Frame Mounts as shown using the supplied $\varnothing 1/2"$ Hex Bolts, Nuts and Washers into the side of the frame.

Use the four factory bolts into the face of the frame.

Position the mounts so they are straight up and down and tighten the bolts securely.



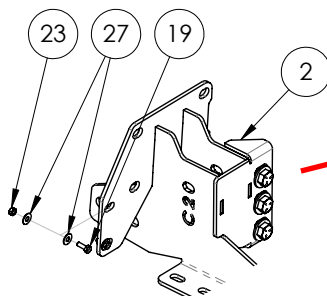
On the backside of the Shutter Assembly there is a locating pin that needs to be removed.

Remove this pin



Install the Shutter Assembly onto the LOD Frame Mounts as showing using $\varnothing 1/4"$ Hex Bolts, Washer and Nut.

Be sure to reconnect the Shutter Assembly wire harness and to route and secure the wire harness out of the way.



****STOP****

If you are installing a Front Hitch or Winch, refer the Installation Instructions before continuing.

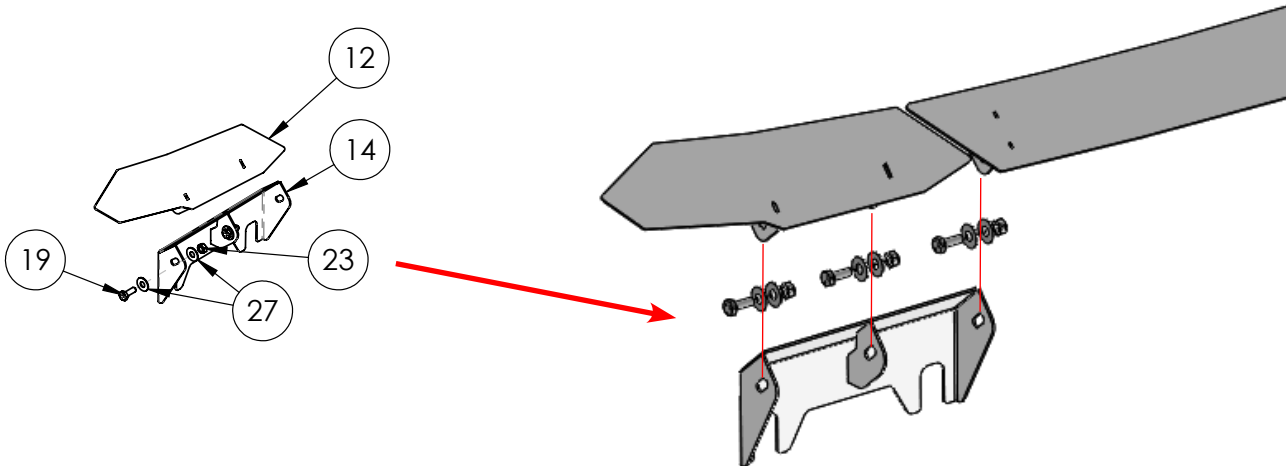
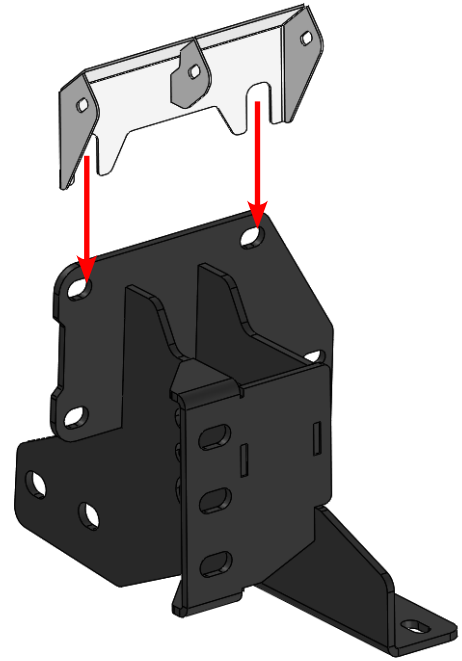
Installing the Center and Side Filler Panels:

First install the Panel Mount Brackets using the factory bolts. These mount onto the top two bolts on your Frame Mounts. Slide the Panel Mount Brackets into position and tighten securely.

Install the Center and Side Filler Panels using Ø1/4" Hex Bolts, Washers and Nuts. Position as shown and just lightly snug the bolts so the panels stay in position but can still be moved.

After your bumper installation is complete, you can adjust these panels so they fill the gap between your bumper and the grill. Once you have them positioned, tighten the bolts securely.

****These bolts are in a tight location and can be tough to reach. It is easier to tighten these if you have a helper to hold the panel and the nut while you tighten the bolt.****



Below is an image of how the Filler Panels should look after your complete your bumper installation.



Parking Sensor Installation

If you do not have parking sensors, skip these steps and install the provided plastic hole plugs.
The sensors may be installed after your LOD bumper is installed

Remove the sensor wiring harness from your stock bumper. It is helpful to label each sensor location on the harness before removing it from the bumper. (Your wiring harness may look different than the one pictured below)



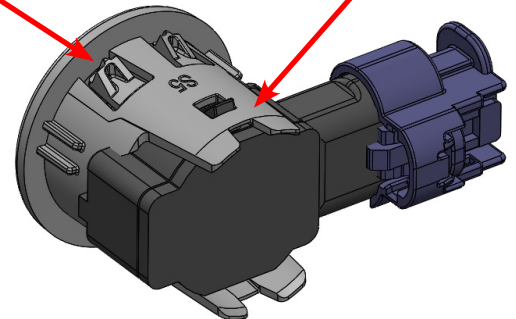
We recommend using the sensor mounting bezels from your stock bumper to mount the sensors into your new LOD bumper. However you can also obtain sensor bezels from your local truck dealer or online.

You will need to remove the sensors from the mounting bezel before removing the bezel from the stock bumper.

*****Be sure to note the location of each bezel and the orientation of the sensor and bezel on the bumper. You will need to install these in the same orientation on your new LOD bumper. It is helpful to take a few pictures of the sensors in the stock bumper before you remove them.*****

Press these tabs to remove from bumper

Pull these tabs to remove sensor

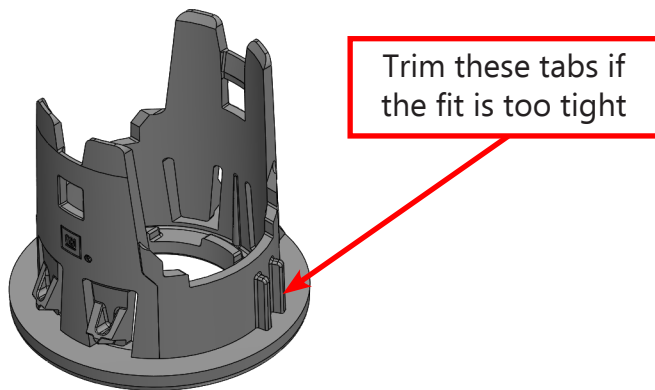


Install the mounting bezels into your new LOD bumper by simply snapping the bezel into the existing hole. Make sure you install the bezels into the same locations in which they were removed.

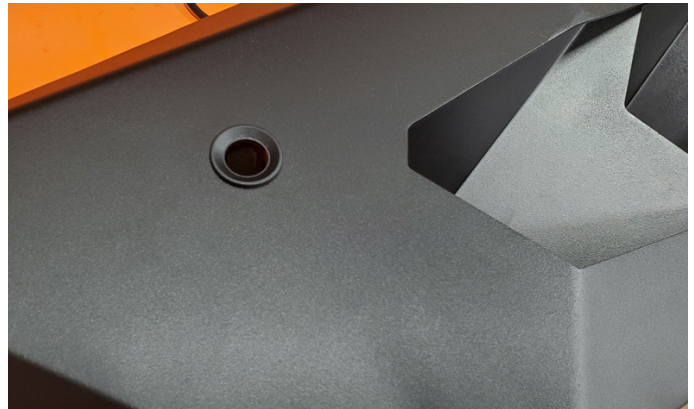
The mounting holes in your LOD bumper were designed to fit a standard sensor bezel. Depending on the style of your sensors, your sensor bezel could fit a little tight or loose.

If the bezel fits loose, simply add a little silicone or other adhesive to the backside to hold the bezel firmly in the mounting hole.

If the bezel fits too tight in the mounting hole, simply trim the small tabs on the side of the bezel to get a snug fit.



Trim these tabs if the fit is too tight

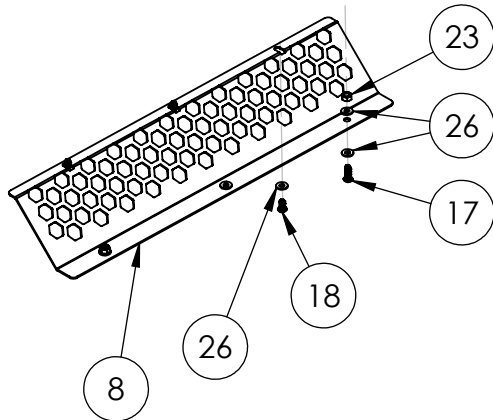


Once your sensor bezels are in place, snap the sensor back into the bezel. ***Make sure the orientation matches how they were in the stock bumper.** After the bumper installation is complete, reinstall the wire harness and secure out of the way.

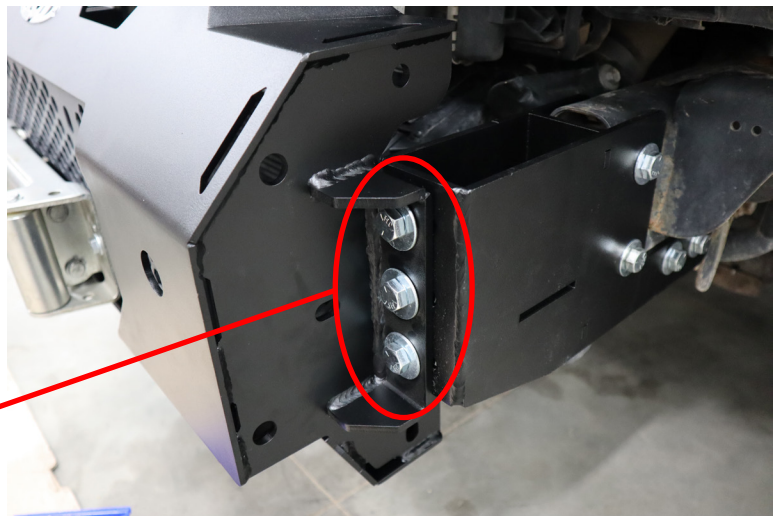
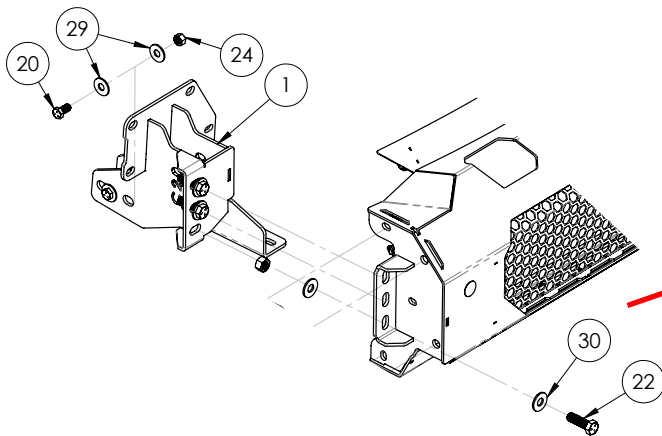
If your wire harness is too short you may need to unwrap the sheathing to expose more length or splice in additional wire to add length where needed.

Install the Lower Front Screen as shown using Ø1/4" Button Head Screws, Washers and Nuts.

If you need to replace the screens in the future, the large Front Screen and the Lower Front Screen can both be installed after the bumper is installed on the truck.



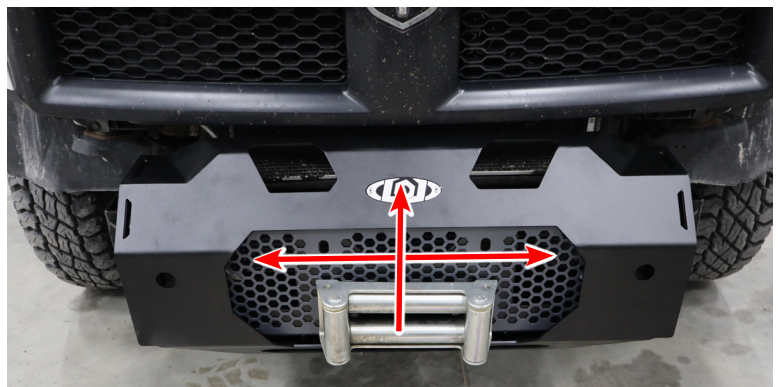
Install the Center Bumper Weldments as shown using Ø5/8" Hex Bolts, Nuts and Washers.



There is some adjustability side to side and up and down.

Make sure the Center Bumper Weldment is centered on the truck, and positioned as high as possible or as close to the grill as possible without touching.

Once in position, securely tighten all 6 mounting bolts.



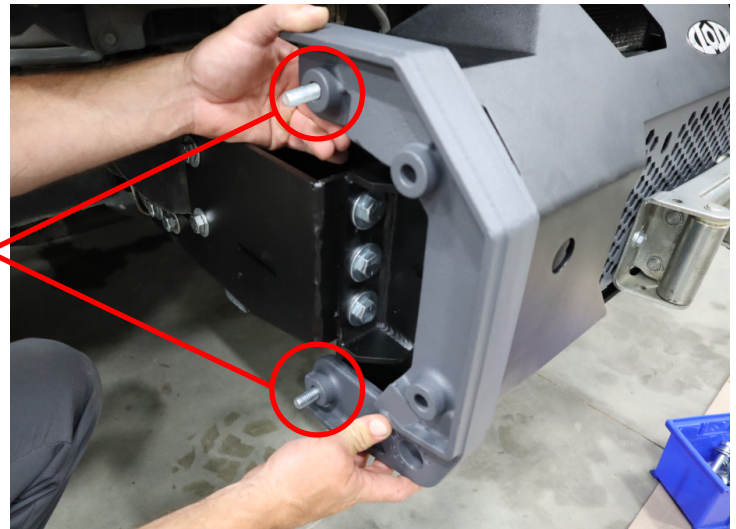
Install the Tow Points onto the Bumper Center as shown using the Ø1/2" Hex Bolts, Nuts and Washers.

Insert the bolts from inside the Bumper Center pointing out. If you are going to install a Bull Bar or Center Guard you can leave the top two bolts out for now. Otherwise start by installing 2 bolts (one at the top and one at the bottom) and position the tow point.

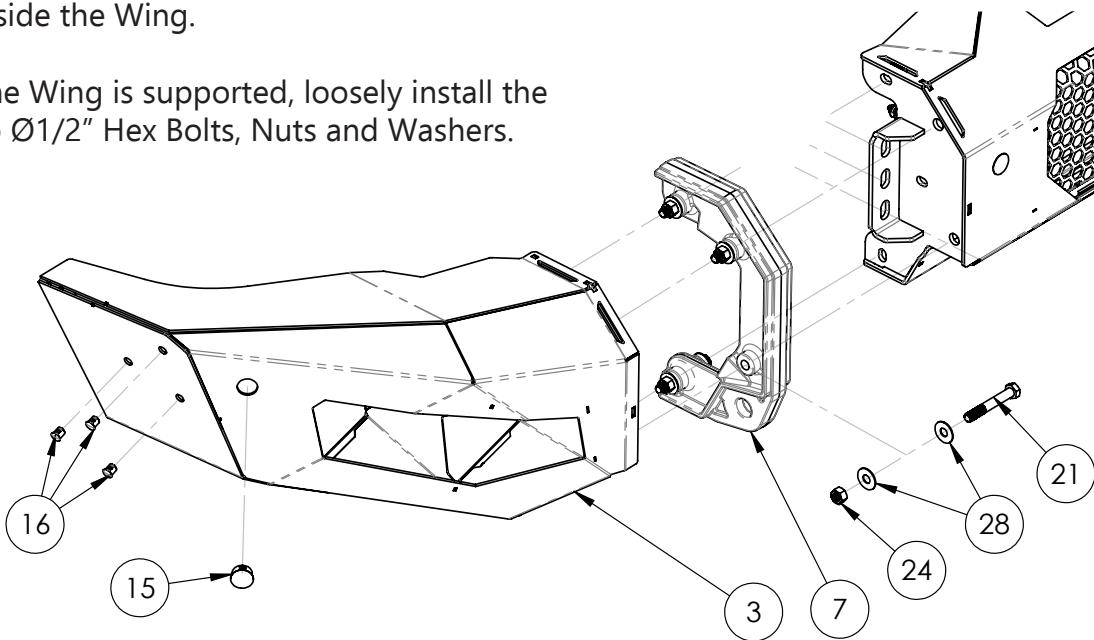
The Tow Points and Wings are heavy. It is best to have a helper to hold the Wing and Tow Point in position.

While holding the Tow Point and bolts in position, have a helper place the Wing onto the bolts. Then loosely install the Washer and Nut from inside the Wing.

Once the Wing is supported, loosely install the last two Ø1/2" Hex Bolts, Nuts and Washers.



TIP: A few pieces of blue masking tape can also help hold the Tow Point and Bolts in position while positioning the Wing.



With a helper, position the Wing so the gap between the top of the Wing and the truck body line are even and parallel.

Gaps

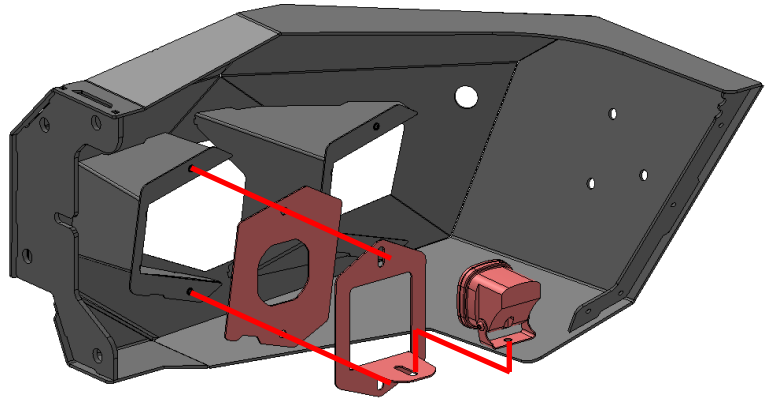
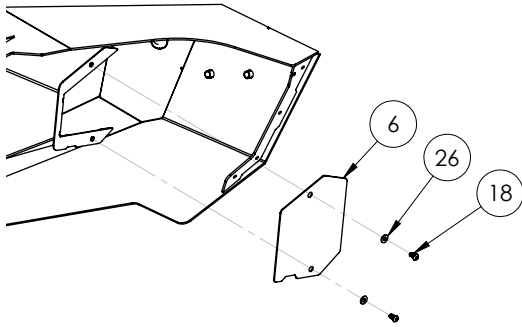
At the same time position the Tow Point so the gap between the bumper and Tow Point is even.

Gaps

Once everything is in position, securely tighten all four hex bolts.



Install the your lights and Light Bezels using the Ø1/4" Button Head Screws as shown.



Once the installation is complete you can trim your inner fender liners to match up with the bumper.



****Maintenance****

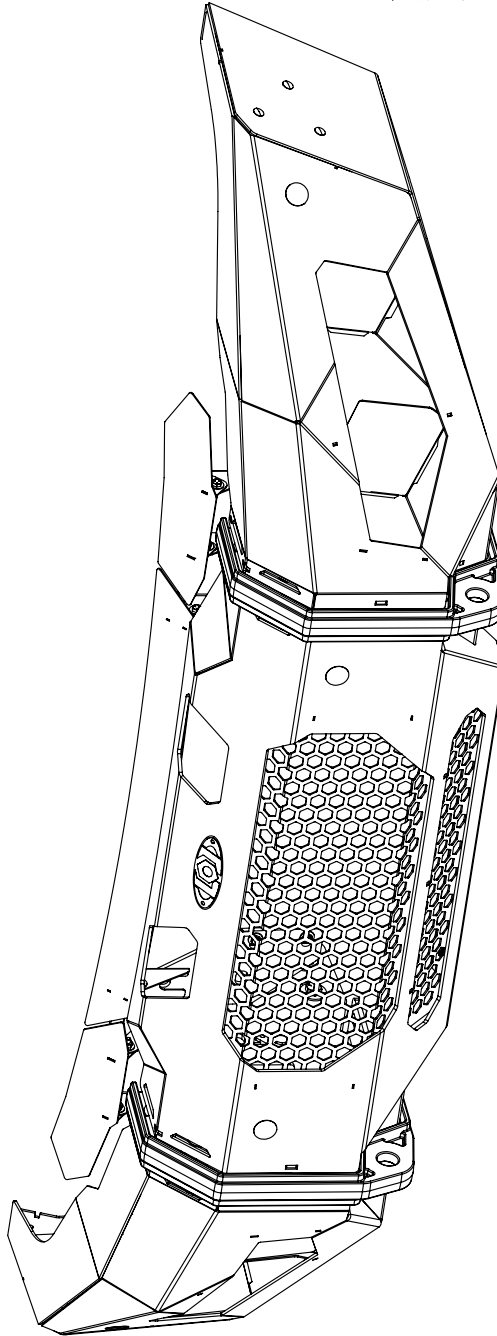
- Periodically check and re-tighten all fasteners.
- Periodically check your product for scratches, dings, or rust spots which can happen over time or after heavy use. It is important to address these areas as soon as possible to prevent rust and corrosion from spreading. We recommend using Rustoleum® brand Black Semi-Gloss Protective Enamel (oil based). Apply using a foam brush by dabbing to match the powder coat texture.



ITEM NO.	PART NUMBER	DESCRIPTION	QTY.
1	4CFB2020-01	CHEVY 2020 FRONT MOUNT - PS	1
2	4CFB2020-02	CHEVY 2020 FRONT MOUNT - DS	1
3	4CFB2020-03	CHEVY 2020 FRONT WING WELDMENT - PS	1
4	4CFB2020-04	CHEVY 2020 FRONT WING WELDMENT - DS	1
5	4MFB2020-01	MODULAR CENTER WELDMENT	1
6	2MFL2000-01	MODULAR FRONT LIGHT BEZEL - BLANK	4
7	2MFB2020-11	MODULAR TOW POINT	2
8	2MFB2020-18	LOWER SCREEN	1
9	2MFB2020-17	FRONT SCREEN	1
10	LOGO1001	DESTROYER LOGO - EMBOSSED	1
11	4CFB2020-09	CENTER PANEL	1
12	4CFB2020-07	SIDE PANEL - PS	1
13	4CFB2020-08	SIDE PANEL - DS	1
14	4CFB2020-10	PANEL MOUNT BRACKET	2
15	HP 1004	HOLE PLUG Ø1.125"	4
16	HP 1006	HOLE PLUG Ø0.50" BLACK	6

BOLT KIT

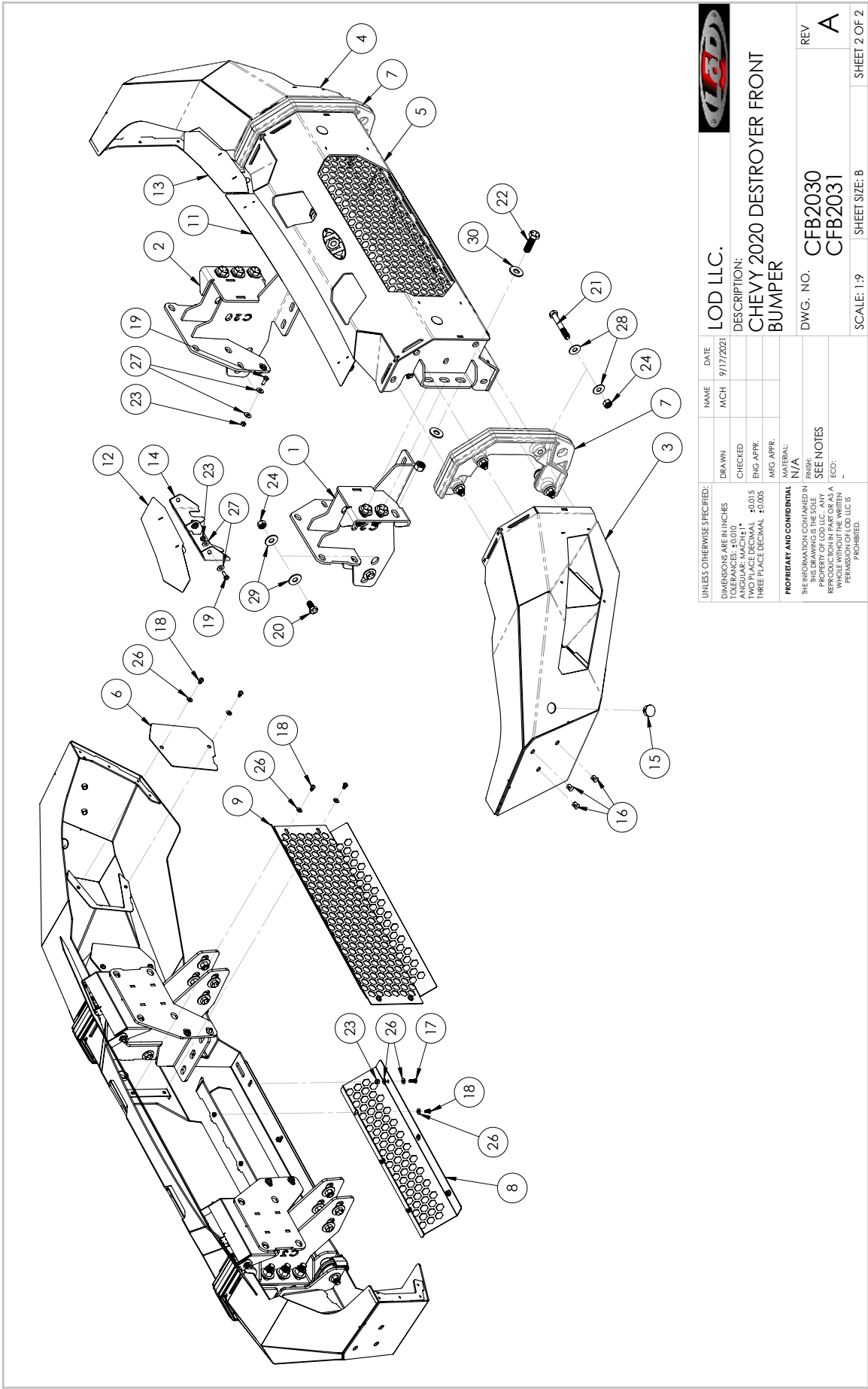
ITEM NO.	PART NUMBER	DESCRIPTION	QTY.
17	BHSCS2520122P	BHSCS 1/4-20 X .75 ZINC PLATE	3
18	BHSCS2520082P	BHSCS 1/4-20 X 0.50 ZINC PLATE	15
19	HB2520122PGR5	HEX BOLT 1/4-20 X .75 HEX BOLT ZINC PLATE GR5	10
20	HB5013162PGR5	HEX BOLT 1/2-13 X 1.00 HEX BOLT ZINC PLATE GR5	8
21	HB5013562PGR5	HEX BOLT 1/2-13 X 3.50 HEX BOLT ZINC PLATE GR5	8
22	HB211322PGR5	HEX BOLT 5/8-11 X 2.00 HEX BOLT ZINC PLATE GR5	6
23	HN25202PGR5	HEX NUT 1/4-20 ZINC PLATED GR5	13
24	HN50132PGR5	HEX NUT 1/2-13 ZINC PLATE GR5	16
25	HN62112PGR5	HEX NUT 5/8-11 ZINC PLATE GR5	6
26	FW12092P	FLAT WASHER #12 X .56" ZINC PLATED	21
27	FW25122P	FLAT WASHER Ø1/4" X .75 ZINC PLATE	20
28	FW43182P	FLAT WASHER Ø7/16 X 1.25" ZINC PLATED	16
29	FW50222P	FLAT WASHER Ø1/2" X 1.375" ZINC PLATE	16
30	FW56242P	FLAT WASHER Ø9/16" X 1.47" ZINC PLATE	12



- NOTES:**
1. CFB2030 = BARE STEEL OPTION
 2. CFB2031 = BLACK POWDER COAT
 3. WEIGHT = APPROX 160LBS

UNLESS OTHERWISE SPECIFIED:		NAME	DATE
DIMENSIONS ARE IN INCHES		MCH	9/17/2021
TOLERANCES: ±0.010	DRAWN	CHECKED	
ANGULAR: MACH ±1°	ENGINEER	ENG APPR.	
THREADS PER INCH: 2015	DESIGNER	MFG APPR.	
THREE PLACE DECIMAL .005	MATERIAL:		
	N/A		
PROPRIETARY AND CONFIDENTIAL			
THE INFORMATION CONTAINED IN THIS DRAWING IS THE SOLE PROPERTY OF LOD LLC. ANY REPRODUCTION IN PART OR AS A WHOLE WITHOUT THE WRITTEN PERMISSION OF LOD LLC IS PROHIBITED.			
DESCRIPTION:		DWG. NO.	
CHEVY 2020 DESTROYER FRONT BUMPER		CFB2030	
REV		CFB2031	
SCALE: 1:6		SHEET SIZE: B	
		SHEET 1 OF 2	





LOD LLC.

DESCRIPTION:

CHEVY 2020 DESTROYER FRONT

BUMPER

DWG. NO. CFB2030

CFB2031

SCALE: 1:9

SHEET SIZE: B

NAME MCH

DATE 9/17/2021

DRAWN

CHECKED

ENG APPR.

MFG APPR.

MATERIAL

N/A

UNLESS OTHERWISE SPECIFIED:

DIMENSIONS ARE IN INCHES

ANGULAR: MACH 1°

TWO PLACE DECIMAL ±0.015

THREE PLACE DECIMAL ±0.005

PROPRIETARY AND CONFIDENTIAL

THE INFORMATION CONTAINED IN THIS DRAWING IS THE SOLE PROPERTY OF LOD LLC. ANY REPRODUCTION OR TRANSMISSION OF THIS INFORMATION WITHOUT THE WRITTEN PERMISSION OF LOD LLC IS PROHIBITED.

FINISH SEE NOTES

ECO:

PERMISSION OF LOD LLC IS PROHIBITED.

REV A

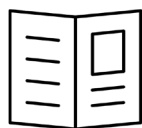
SHEET 2 OF 2



TRUCK
DESTROYER SERIES
FRONT BUMPER - CENTER
SHIPPING SHEET
6MFB2020-01

Packaged by:

On:



INSTRUCTION
SHEET

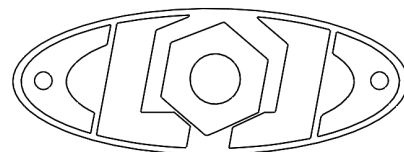


DESTROYER FRONT
BUMPER - CENTER
BOLT KIT
6MFB2020-BK
(x1)

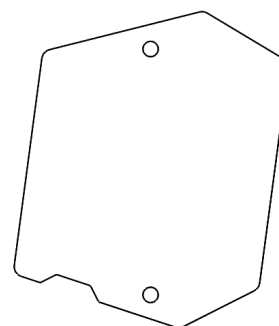
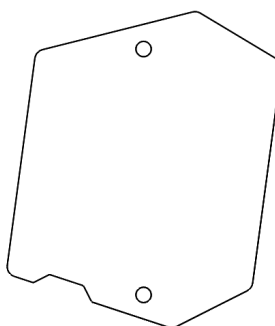
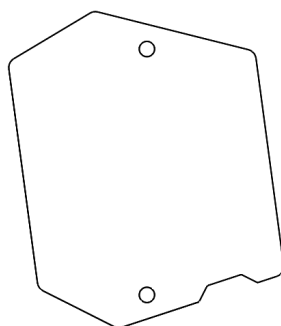
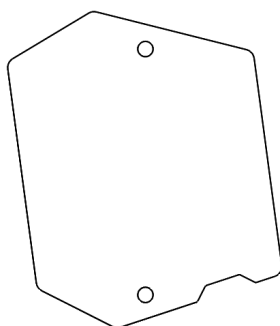
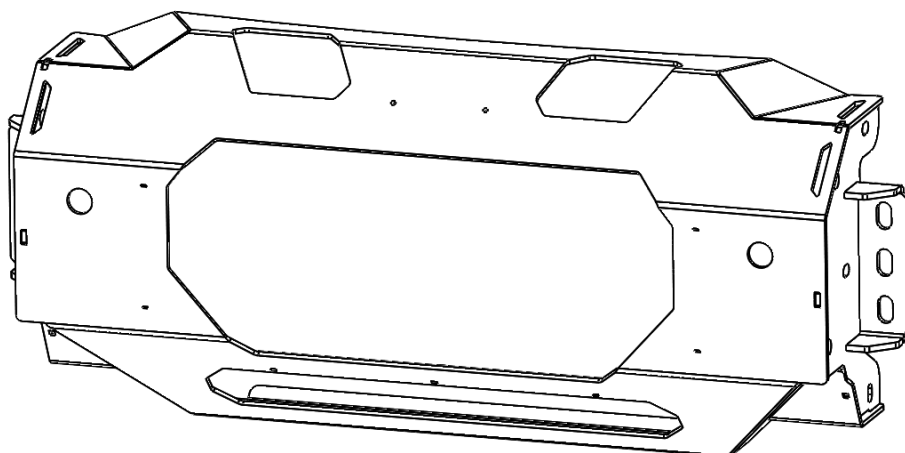


LOD LOGO
(PACKAGED SEPERATE
IF BUMPER IS BARE STEEL)

(x1)

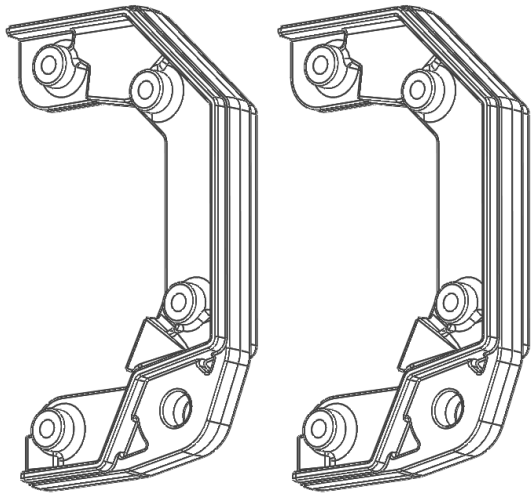


DESTROYER MODULAR CENTER
WELDMENT
4MFB2020-01
(x1)

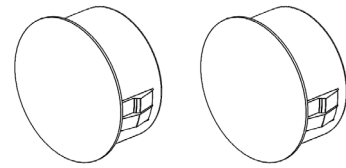


DESTROYER BLANK LIGHT
BEZEL KIT
2MFL2001-01
(x1)

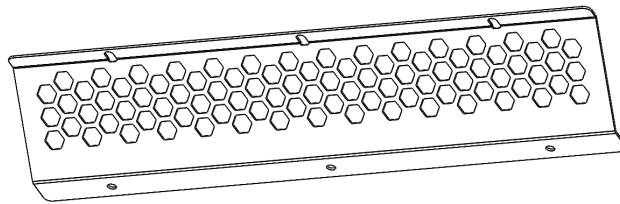




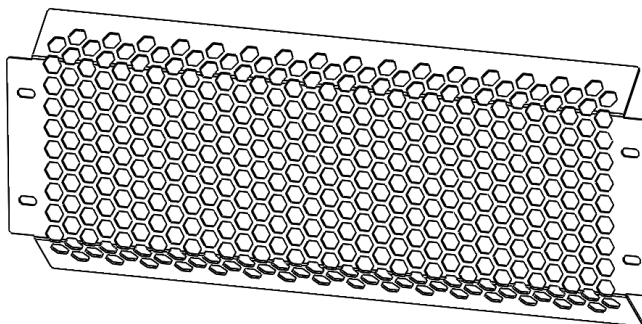
DESTROYER MODULAR
TOW POINT
2MFB2020-11
(x2)



HOLE PLUG Ø1.125
HP1004
(x2)



LOWER SCREEN
2MFB2020-18
(x1)



FRONT SCREEN
2MFB2020-17
(x1)

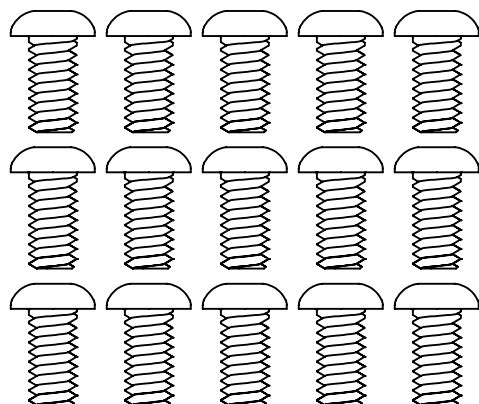




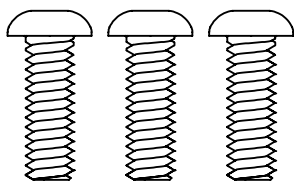
TRUCK
DESTROYER SERIES
FRONT BUMPER - CENTER
Bolt Kit
6MFB2020-BK

Packaged by:

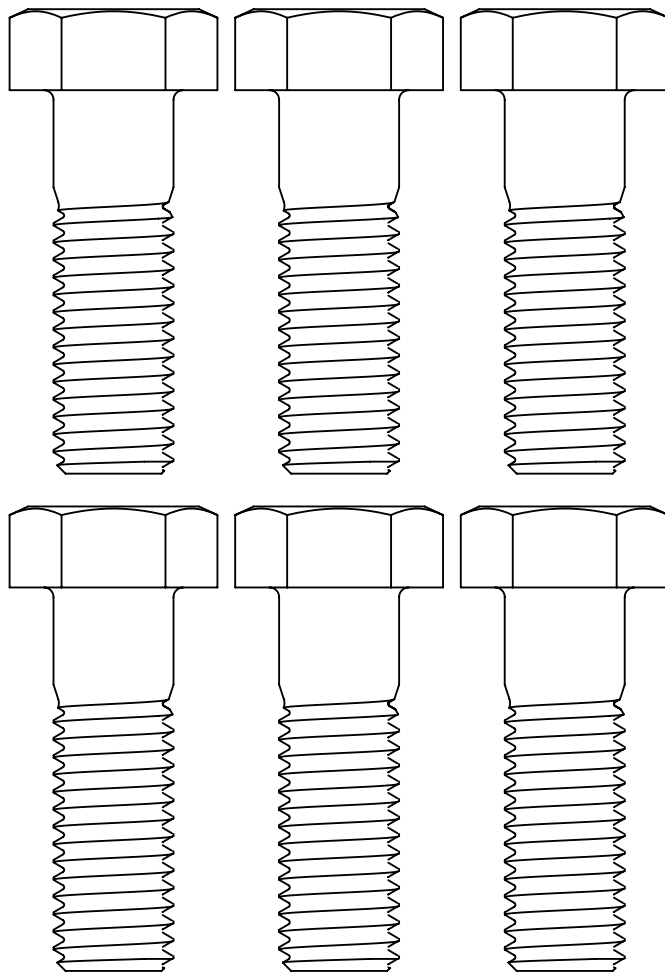
On:



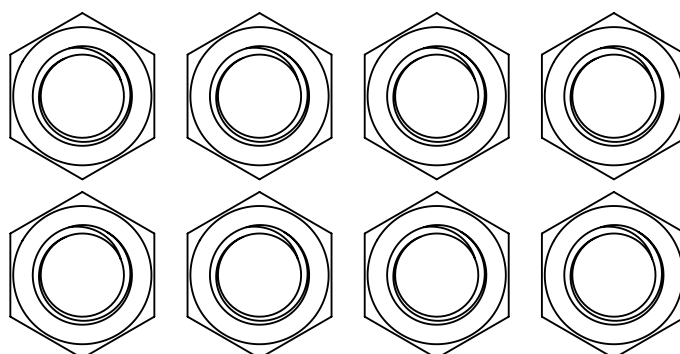
BUTTON HEAD SCREW
1/4-20 X 0.50"
(94049)
(x15)



BUTTON HEAD SCREW
1/4-20 X 0.75"
(94051)
(x3)

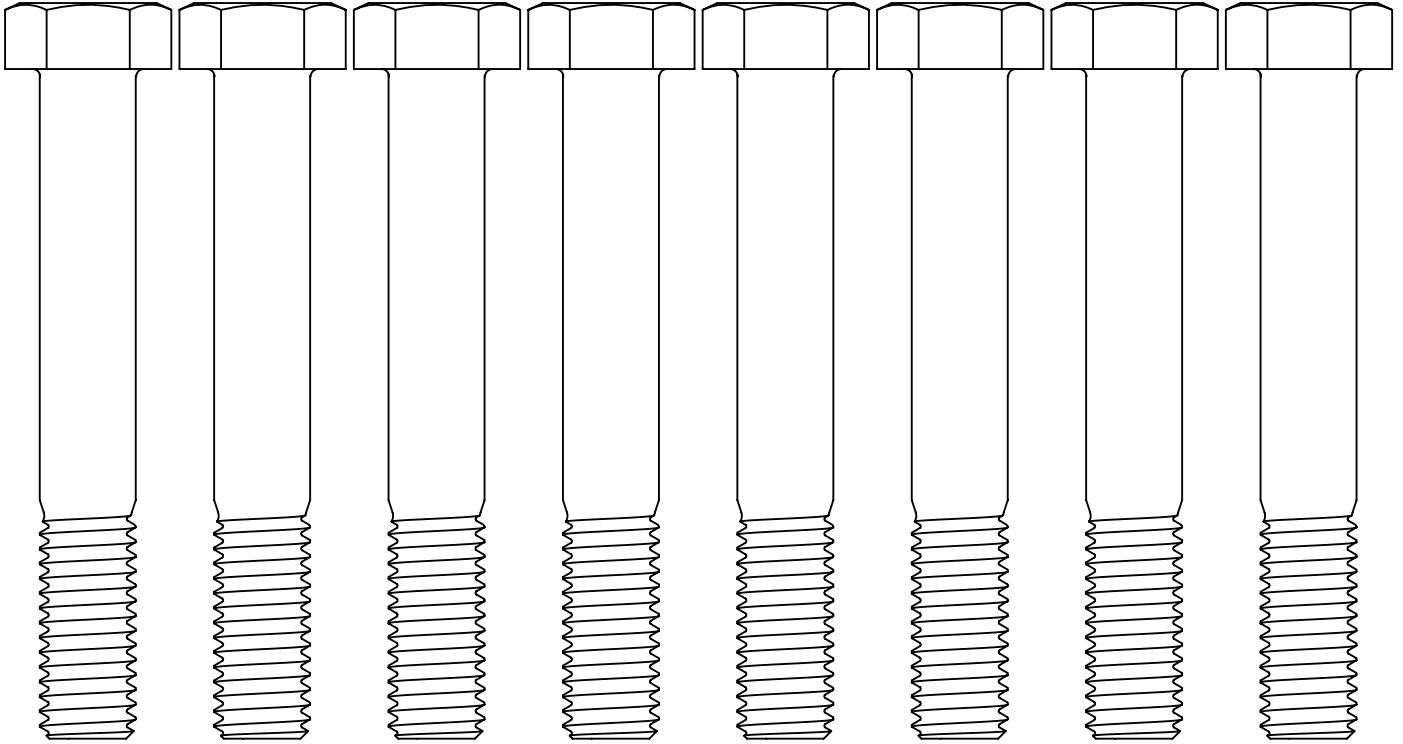


HEX BOLT 5/8-11 X 2.00"
(0137562)
(x6)



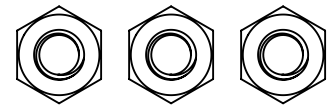
HEX NUT 1/2-13
(0147968)
(x8)





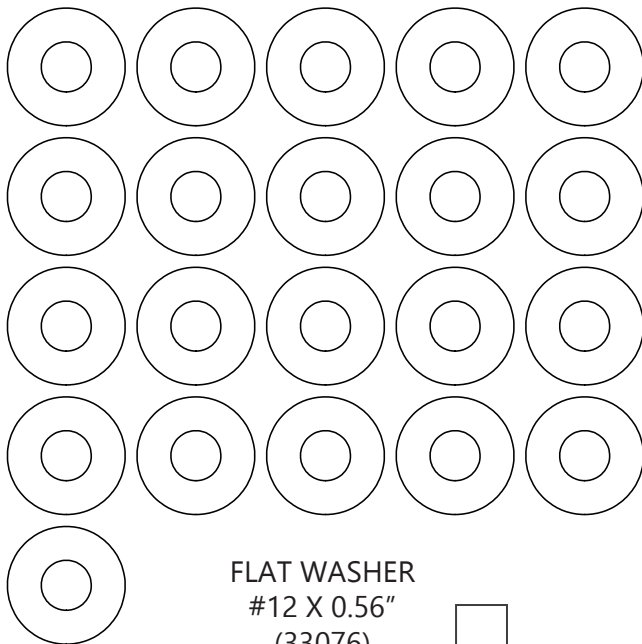
HEX BOLT 1/2-13 X 3.50"
(0137553)

(x8)



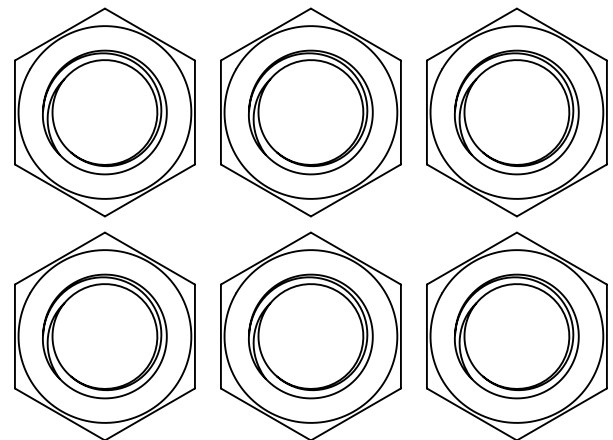
HEX NUT 1/4-20
(0147964)

(x3)



FLAT WASHER
#12 X 0.56"
(33076)

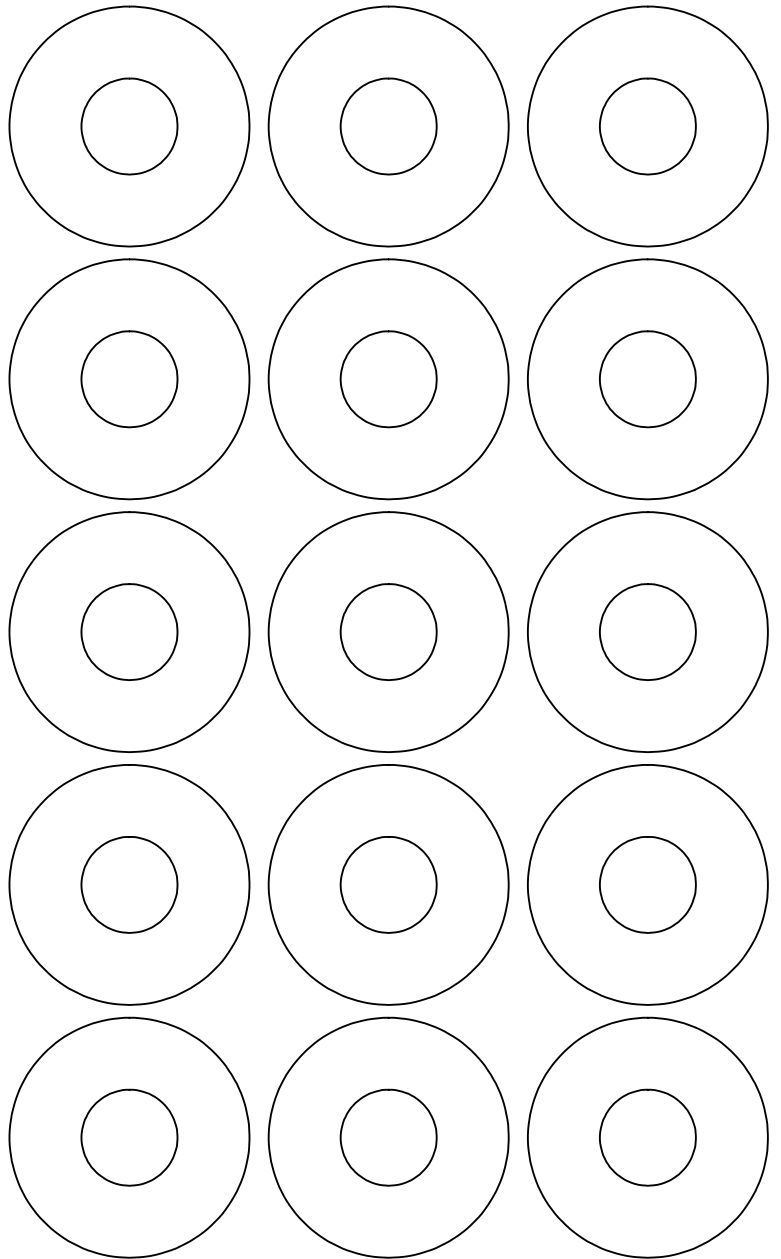
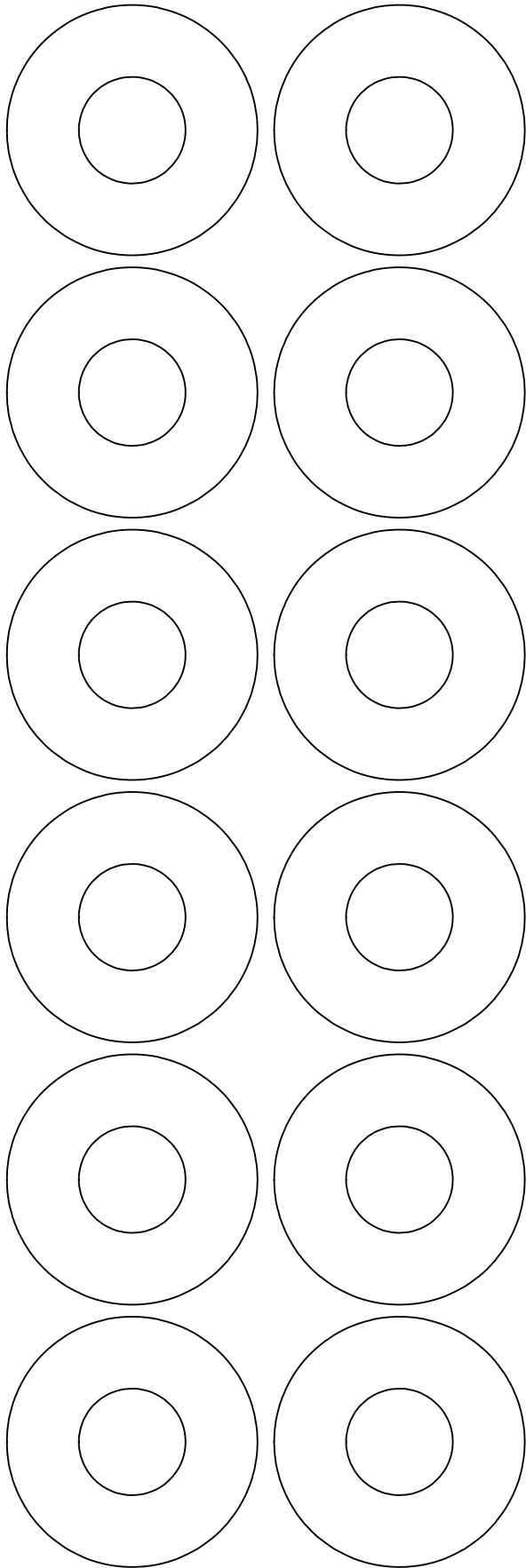
(x21)



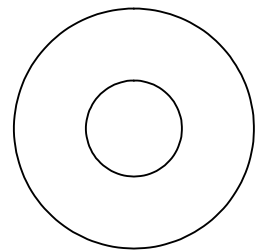
HEX NUT 5/8-11
(0147970)

(x6)





FLAT WASHER
Ø7/16" X 1.25"
(0159680)
(x16)



FLAT WASHER
Ø9/16" X 1.47"
(0159682)
(x12)

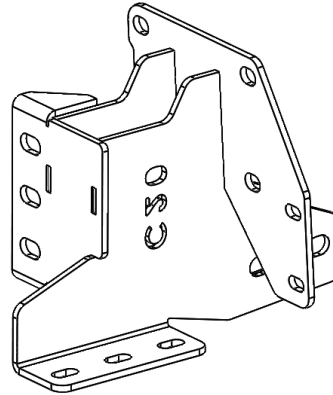
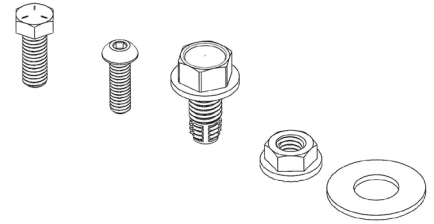


TRUCK
DESTROYER SERIES
CHEVY 2020 FRONT WING
PASSENGER SIDE
SHIPPING SHEET-1
6CFB2020-01

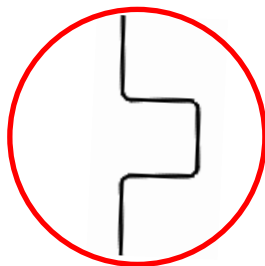
Packaged by:

On: _____

CHEVY 2020 FRONT
WING BOLT KIT
6CFB2020-BK
(x1)



CHEVY 2020
FRAME MOUNT - PS
4CFB2020-01
(x1)

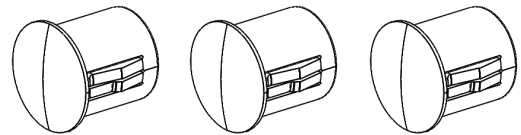


CHEVY 2020
IDENTIFIER

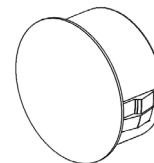
CHEVY 2020
FRONT WING - PS
4CFB2020-03
(x1)



HOLE PLUG Ø0.50
HP1006
(x3)



HOLE PLUG Ø1.125
HP1004
(x1)

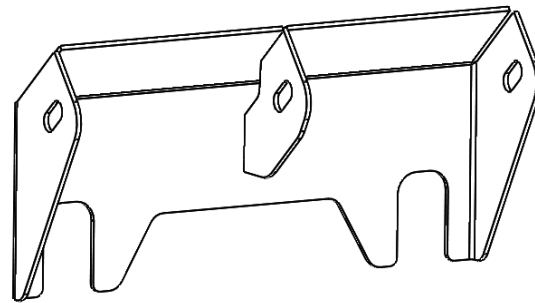




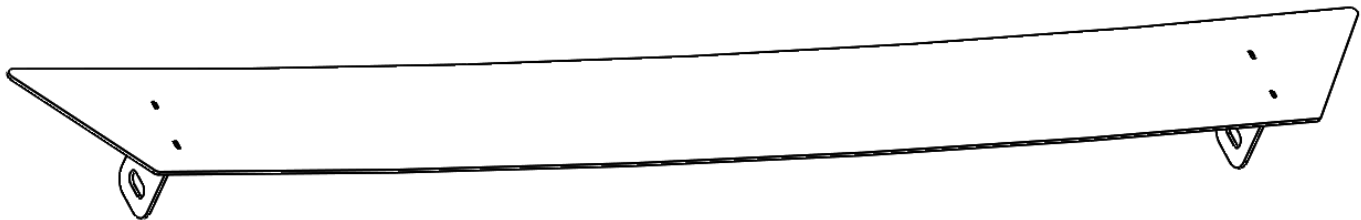
TRUCK
DESTROYER SERIES
CHEVY 2020 FRONT WING
PASSENGER SIDE
SHIPPING SHEET-2
6CFB2020-01

Packaged by:

On:



PANEL MOUNT BRACKET
4CFB2020-10
(x1)



FILLER CENTER PANEL
4CFB2020-09
(x1)



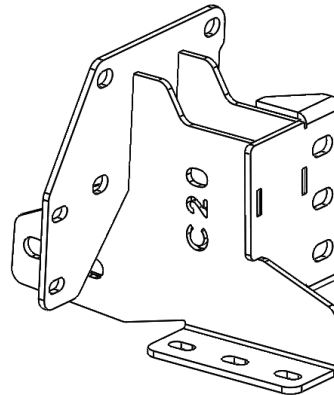
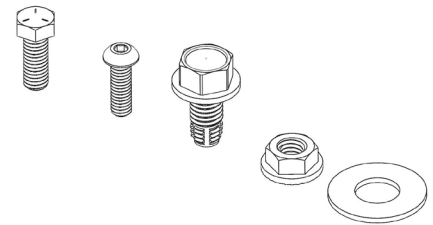


TRUCK
DESTROYER SERIES
CHEVY 2020 FRONT WING
DRIVER SIDE
SHIPPING SHEET-1
6CFB2020-02

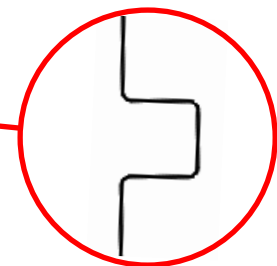
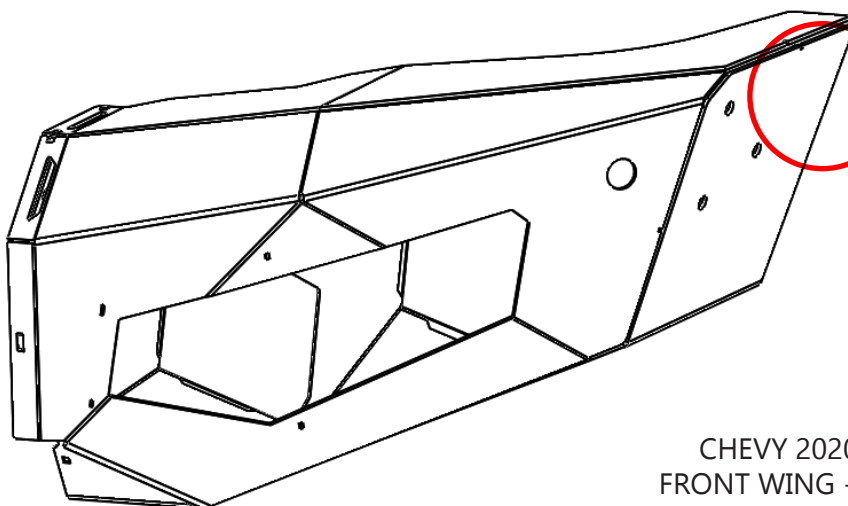
Packaged by:

On:

CHEVY 2020 FRONT
WING BOLT KIT
6CFB2020-BK
(x1)



CHEVY 2020
FRAME MOUNT - DS
4CFB2020-02
(x1)

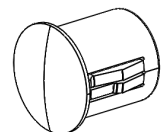
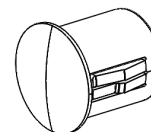
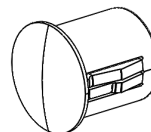


CHEVY 2020
IDENTIFIER

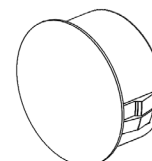
CHEVY 2020
FRONT WING - DS
4CFB2020-04
(x1)



HOLE PLUG Ø0.50
HP1006
(x3)



HOLE PLUG Ø1.125
HP1004
(x1)

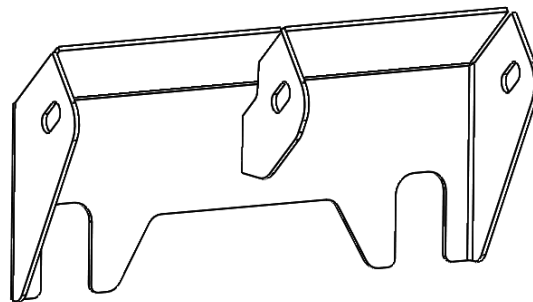




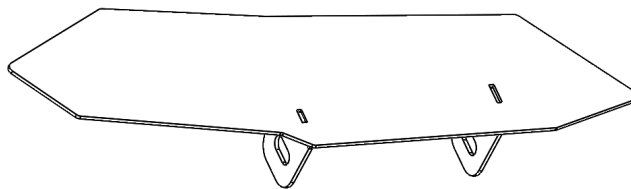
TRUCK
DESTROYER SERIES
CHEVY 2020 FRONT WING
DRIVER SIDE
SHIPPING SHEET-2
6CFB2020-02

Packaged by:

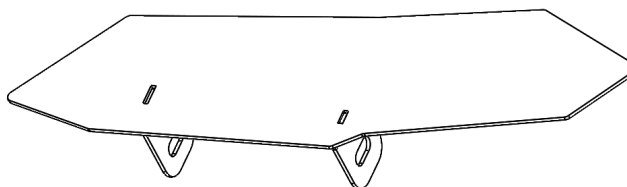
On:



PANEL MOUNT BRACKET
4CFB2020-10
(x1)



FILLER SIDE PANEL - PS
4CFB2020-07
(x1)



FILLER SIDE PANEL - DS
4CFB2020-08
(x1)

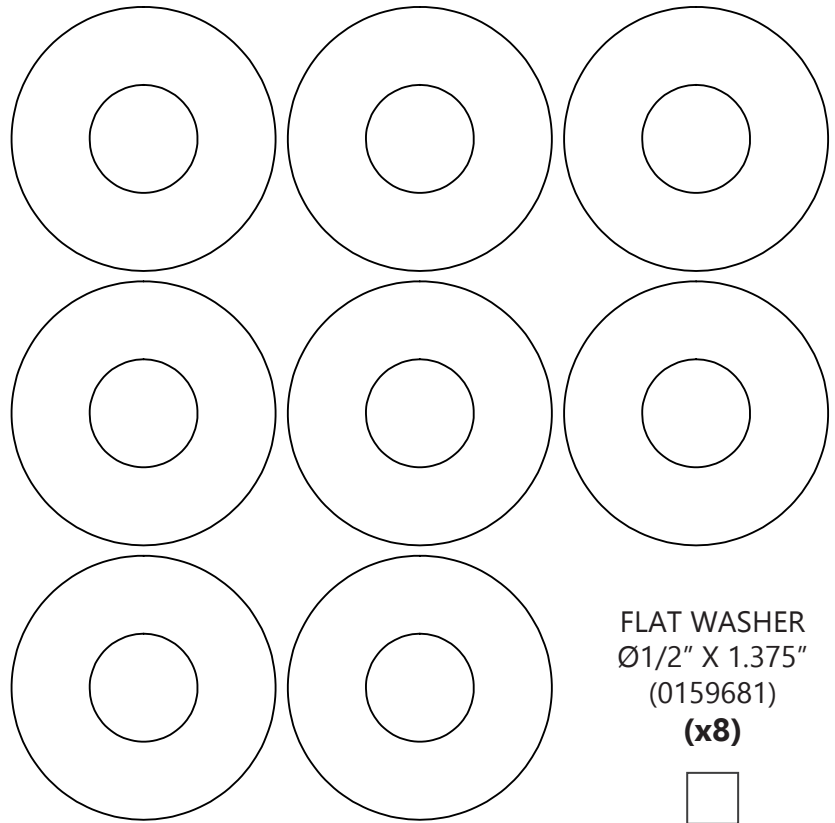




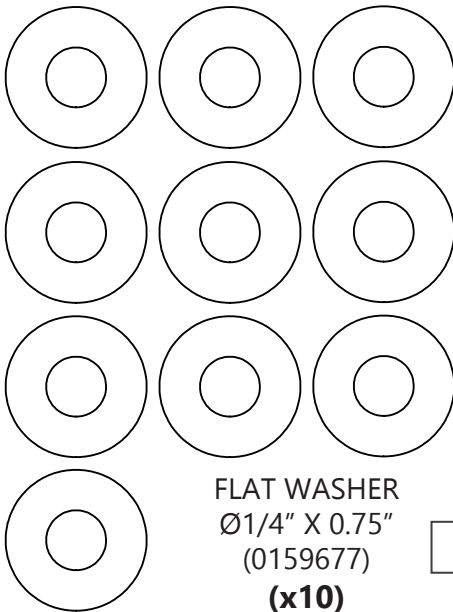
TRUCK
DESTROYER SERIES
CHEVY 2020 FRONT WING
6CFB2020-BK

Bolt Kit
Packaged by:

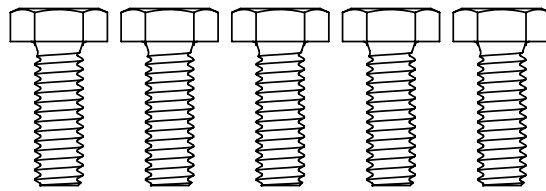
On:



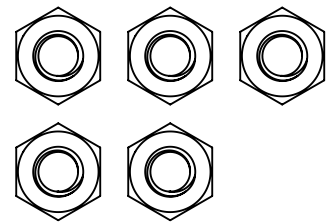
FLAT WASHER
Ø1/2" X 1.375"
(0159681)
(x8)



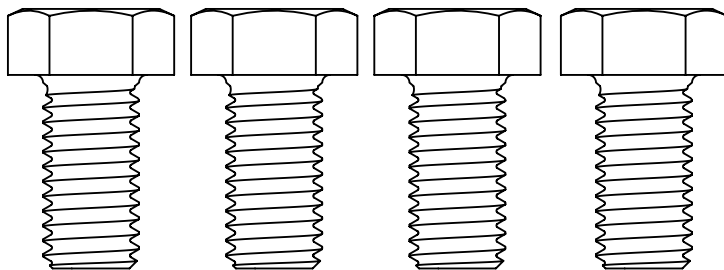
FLAT WASHER
Ø1/4" X 0.75"
(0159677)
(x10)



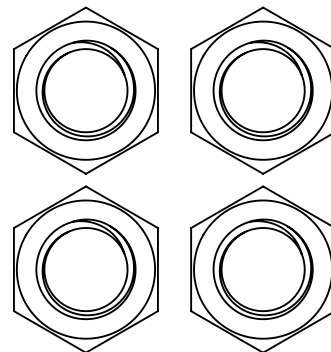
HEX BOLT 1/4-20 X 0.75"
(0137486)
(x5)



HEX NUT 1/4-20
(0147964)
(x5)



HEX BOLT 1/2-13 X 1.00"
(0137543)
(x4)



HEX NUT 1/2-13
(0147968)
(x4)

